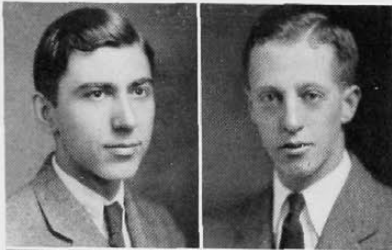


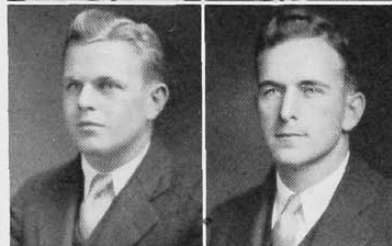
The Cincinnati



J. P. WERNER VOLLBRECHT,
A.B.
German Club 2, 3, 4; Spanish Club
3, 4; International Relations Club
3, 4.



DOLORES E. WAGNER,
B.S.
Applied Arts Club; Y. W. C. A.;
Greek Games.



FRED P. WALDMAN,
A.B.
 ΣAE , *Ulex*
"C" Club; Football 2, 3, 4; Base-
ball 2, 3, 4; Junior Class President;
Junior Prom Comm.



ROBERT E. WATKINS,
Com. E.
 $KK\Psi$
Band; Dorm Council; Frosh Recep-
tion Comm.

RICHARD G. VREELAND,
M.E.
 IXE , $\Sigma\Delta\Psi$, *Ulex*
Track 2, 3, 4; Cross Country 2, 3,
4; Honorary Track Capt. 1929.

ROBERT L. WAGNER,
Com. E.
A. C. C., $B\Gamma\Sigma$

GEORGE N. WALLACE,
B.S.
 $\Phi\Delta\Theta$, *Scarab*
A. A. Tribunal 2, 3, 4; Applied Arts
Club, Treas. 4; Applied Arts Jour-
nal 4; Men's Panhellenic Assn.;
Student Council; Men's Vigilance
Comm.; Basketball 2, 3; Junior
Prom Comm.

MARGARET WAYMAN,
A.B.
 $H\Sigma\Phi$
Paleolinguists.

ROBERT G. WEAVER,
A.B.
 ΣAE
Soph Hop Comm.; Cincinnati
Staff 2.

LENORA WEBER,
A.B.

R. E. WEHR,
B.M.

LILLIAN J. WEISS,
A.B.
Spanish Club.

H. WELDON LEWIS,
M.E.
 BK , $HT\Sigma$,
Scabbard and Blade
R. O. T. C. Regimental Staff; R. O.
T. C. Shield Staff, Bus. Mgr. 5.

VIOLA HAWKINS WELLS,
B.S.

HARGIS WESTERFIELD,
A.B.
Literary Society.

DOLORES WHITE,
R.N.
 $AA\Pi$
Y. W. C. A.; Melody Club.

