

# Nineteen-Thirty-One

GLADYS WIDMAN, A.B.  
*HΣΦ*  
 Paleolinguists.

BERT CARLTON WILEY, M.E.

GRACE WILLIAMSON, B.S.  
*ΘΠ*  
 Y. W. C. A.; Household Ad. Club;  
 W. S. G. A.; Chemistry Club.

LOUIS J. WINDGASSEN,  
 Cert. in Accounting

ELIZABETH ANN WIEBKING, A.B.  
*KKΓ*  
 Greek Games; Mummies; Persian  
 Rug; Mummies Board 2, 3, 4, Sec.  
 3; Junior Advisor.

JAMES A. WILLIAMS, M.E.  
*BK, AΦΩ*  
 A. S. M. E.

GLENN H. WILLIS, B.S.  
*Scarab*  
 Varsity Art Club; Architects' Ball  
 Comm. 2, 3, 4.

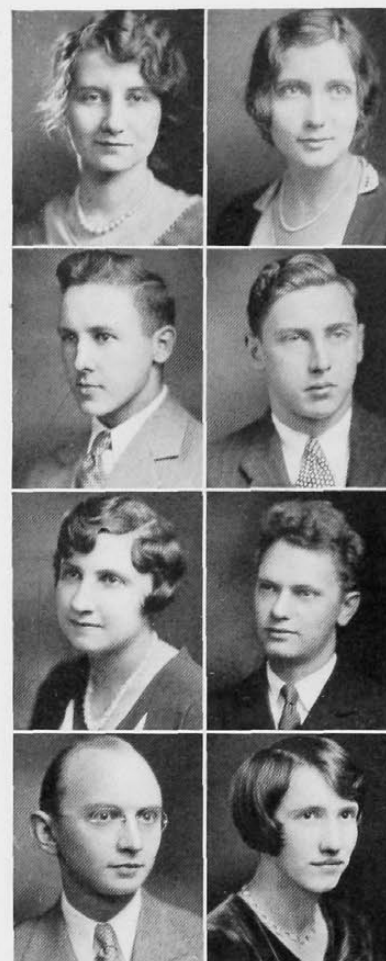
LOUISE F. WINSTON, Com. E.  
*ΠΧΕ*  
 W. A. A.; Co-op Club, Pres. 5;  
 Chem-Commerce Club, Vice-Pres. 4;  
 Co-op Engineer Staff; W. S. G. A.

J. EVERETT WINTER, C.E.  
*ΣΦΗ*

HARRY A. WITTE, Com. E.  
*BK, AKΨ*  
 Co-op Club; Commerce Club; New-  
 man Club.

CARL WOEST, A.B.  
 Polygon Club; Spanish Club; Ger-  
 man Club.

ZOLA WORKMAN, R.N.  
 Y. W. C. A.; Melody Club.



CONSTANCE WITTE, B.S.  
*ΔΩΘ, Areté*  
 W. A. A.; Choritides; Junior Show.

ALICE WITTERIED,  
 Cert. in General Business

ROSE WOLIVER, A.B.  
*ΠAT*

CHARLES J. WRIGHT, Ch. E.  
*AXΣ, TBΠ*  
 A. I. Ch. E.; Y. M. C. A.

