

PHI DELTA PHI

PROFESSIONAL
INTERNATIONAL LEGAL
FRATERNITY



Founded at University of Michigan, 1869

58 Chapters

Hamilton Inn Chapter, Established 1886

Members in Faculty

Merton L. Ferson, Dean	Frank Rowley
Hon. Robert C. Pugh	Hon. John W. Peck
Hon. Thomas H. Darby	C. Fred Luburger
Thomas Lavery	

Active Members

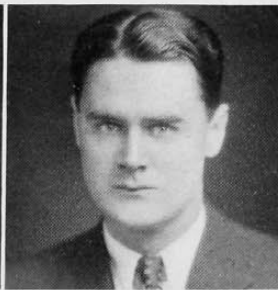
C. Robert Beirne, '32	J. R. Johnston, '31	Julius W. Reif, '31
Robert J. Briede, '32	Walter Kelly, '32	George Rogers, '31
Carl L. Bumiller, '32	Thomas F. Leighton, '31	Harold J. Rose, '31
William J. Dammarell, '31	John A. McIntire, '31	Richard Serviss, '31
Anthony T. Deddens, '32	J. Paul McQueen, '32	John C. Taylor, '31
Carl Felger, '31	Harry B. Mackoy, Jr., '31	Lowell Thompson, '32
Oscar L. Fleckner, '32	Robert P. Manix, '31	Ben Turpen, '32
John E. Halliday, Jr., '32	Dunham Matthews, '32	Cedric Vogel, '31
Charles S. Hire, '32	Thomas J. Murray, '31	Dick M. Wheat, '32
Timothy S. Hogan, '31	Huntington Parrish, '31	Curtis Wilson, '31

Pledges

George F. Clayton, '32	Elmer J. Frech, '33	Richard P. Owsley, '32
Donald Crone, '33	Edward L. Garrett, '32	Kenneth C. Shafer, '32
Albert R. Cunningham, '33	Fred Kotte, '33	Robert Stemen, '33
Stuart Fitton, '33	Robert Manss, '33	Walter L. Tarr, '33
	Leonard Weakley, '33	



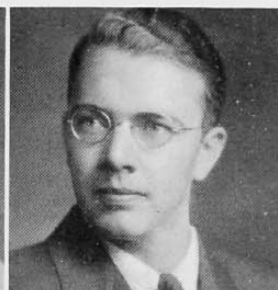
Murray
Cunningham



Dammarell
Fleckner



Reif
Crone



Johnston
Rogers

