

## American Society of Mechanical Engineers

### *Section II*

#### Officers

##### *First Section*

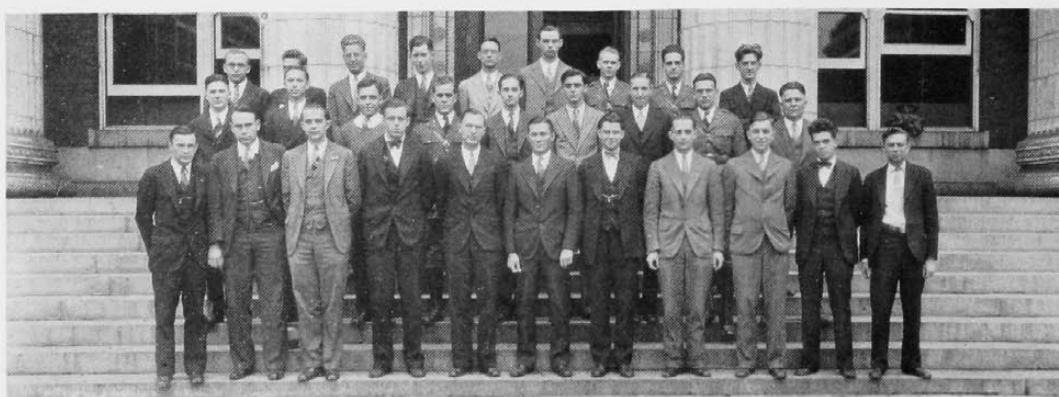
WILLIS B. ENSINGER ..... *President*  
 EDWIN E. CASPELL ..... *Vice-President*  
 LYMAN L. CAMPBELL ..... *Secretary-Treasurer*

The A. S. M. E. Student Branch, like the parent organization, was organized to bring together those of common interests in the arts and sciences of Mechanical Engineering. This organization not only acquaints the student, in a measure, with the procedure and purpose of learned societies but provides a means for direct contact with the senior members of the profession and their current problems.

#### Officers

##### *Second Section*

R. STARR PARKER ..... *President*  
 WM. L. SORENSON ..... *Vice-President*  
 GARY G. SCHULTZ ..... *Secretary*  
 RAY BROSSMER ..... *Treasurer*



### *Section I*