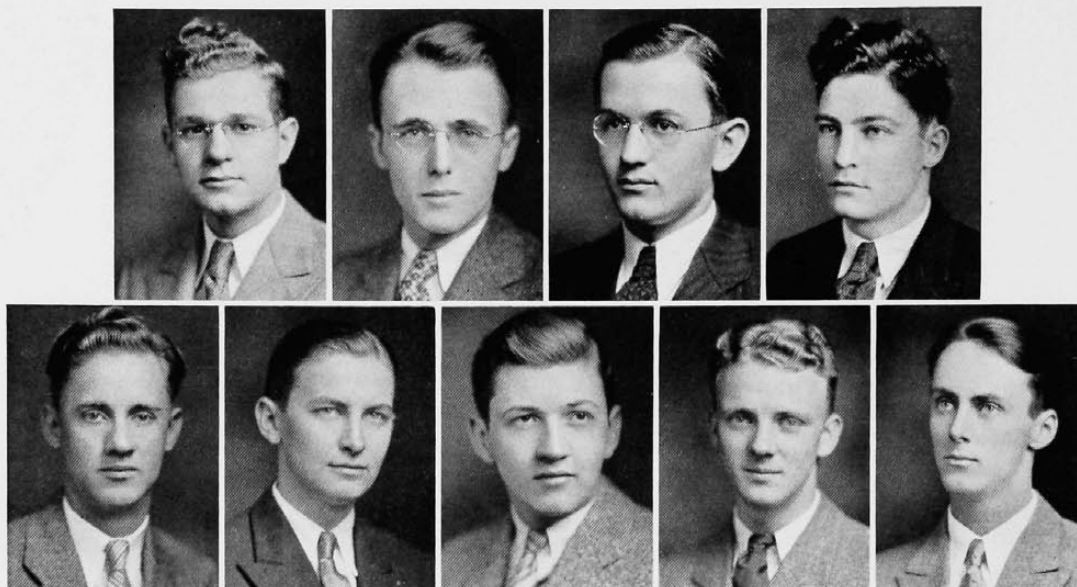


## Men's Applied Arts Tribunal



Millkey      Ralston      Massman      McDaniel      Poetker      Lang      Baetz      Griffith      Erikson

### *Officers*

J. CLIFFORD McDANIEL ..... *President*  
 SAMUEL G. LANG, III ..... *Vice-President*  
 CHARLES W. GRIFFITH ..... *Secretary*  
 MARVIN E. RALSTON ..... *Treasurer*

### *Representatives*

#### *Senior*

J. Clifford McDaniel  
 John A. Massman

Charles W. Griffith  
 Marvin E. Ralston

#### *Junior*

Herbert C. Millkey

Samuel G. Lang, III

Edward Smith

#### *Pre-Junior*

George Baetz

Joseph Poetker

#### *Sophomore*

Oscar Erikson