



Caspell

Meese

## The Co-operative Engineer

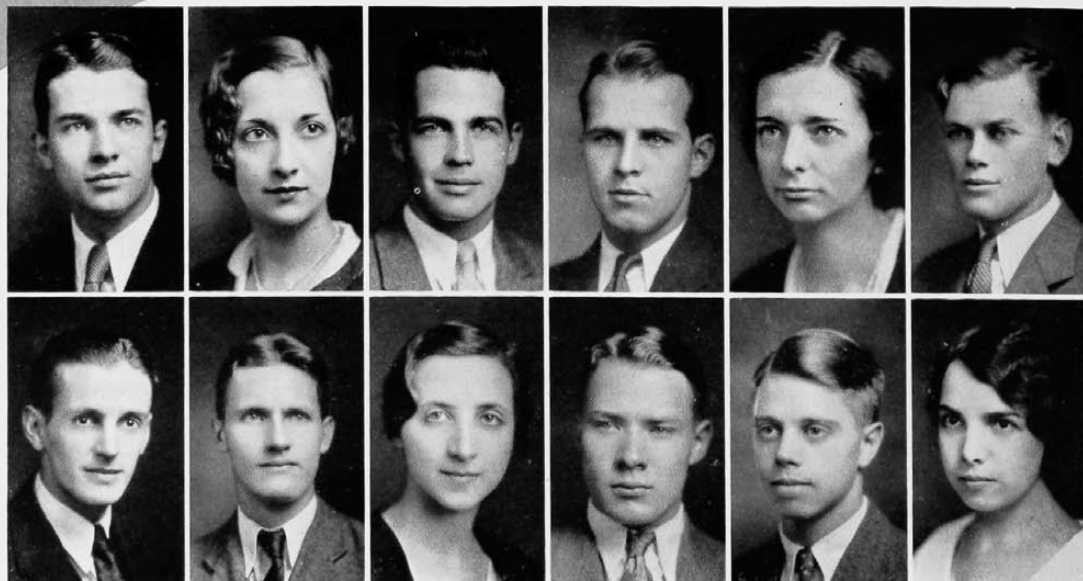
Published Quarterly by the Students and Alumni of the College of Engineering and Commerce

### Board of Control

EDWIN E. CASPELL, '32.....	Editor-in-Chief
RICHARD W. VOSLAMBER, '33.....	Managing Editor
FRED TOWER, '32.....	Executive Secretary
CLARENCE R. MEESE, '32.....	Business Manager
ROSCOE S. DYSON, '32.....	President Engineering Tribunal
ROLLAND H. DETJEN, '32.....	President of Co-op Club
PROF. CLYDE W. PARK.....	Editorial Advisor
PROF. DANIEL COOK.....	Art Advisor
PROF. NORWOOD C. GEIS.....	Business Advisor

### Staff

EZRA A. BLOUNT, '32.....	Alumni Editor
OSCAR S. BRAY, '32.....	Associate Editor
CHARLES T. HENDRICK, '32.....	Associate Editor
MERRILL LEACH, '32.....	Associate Editor
WALTER M. CONNER, '32.....	Art Editor
NED DRUCKER, '34.....	Assistant Editor
A. F. LEVY, '34.....	Assistant Editor
RUTH L. RICHEY, '34.....	Assistant Editor
MIRIAM C. ROLLMAN, '32.....	Assistant Business Manager
MARSHALL C. HUNT, '33.....	Advertising Manager
DOROTHY BROWN, '32.....	Assistant Advertising Manager
ALICE FUNKE, '34.....	Exchange Manager
DOROTHY DONAHUE, '33.....	Assistant Exchange Manager
RICHARD G. OLT, '32.....	Circulation Manager
EDWARD B. KRAMER, '33.....	Assistant Circulation Manager
EDNA BECKMAN, '33.....	Assistant Circulation Manager



Hunt  
Hendrick

Funke  
Leach

Tower  
Brown

Simmons  
Blount

Donohue  
Olt

Bray  
Rollman