



EMIL CHRISTENSEN  
C.E.

RUTH CLARKE  
A.B.



GEORGE F. CLAYTON  
LL.B.  
AXP,  $\Phi\Delta\Phi$

ALDRED CODLING  
Cert. in C. E.  
 $\Delta\N\Delta$



RUTH COFFING  
B.S.  
 $\chi\Omega$

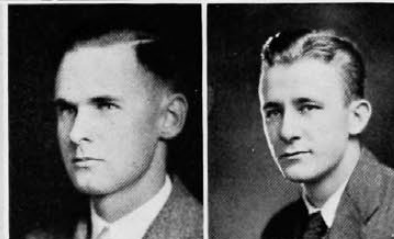
DAN COHEN  
LL.B.  
 $\Phi\Sigma\Pi$

CAROLINE H. COLLIER  
A.B.  
 $\Delta\Delta\Delta$



LLOYD COMBS  
A.B.

FRANK COMERFORD  
C.E.  
*Acacia-Braune Civils*



WALTER M. CONNER  
B.S.  
*B\Theta\P, Scarab, Ulex,  
\Sigma\S, Fresh Painters*

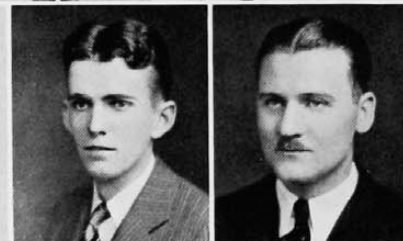
HELEN CONRAD  
A.B.

HELEN CONWAY  
A.B.  
 $\Theta\Phi\Delta$



JAMES CONWAY, JR.  
A.B.  
 $\Sigma\chi, \Phi\Delta\Delta$

BURROUGHS COOPER  
B.S.  
 $\Delta\Sigma\Pi$



PAUL COPE  
Chem. E.

JOE COPPERSMITH  
B.S.

