

THAD LAUDERMAN  
Cert. in Accounting

MERRILL LEACH  
Ch. E.



DAVID LERNER  
B.M.  
 $\Phi\Delta E$

MINA BELLE LEVI  
Com. E.  
 $\Sigma\Delta T, \Pi\Phi E$



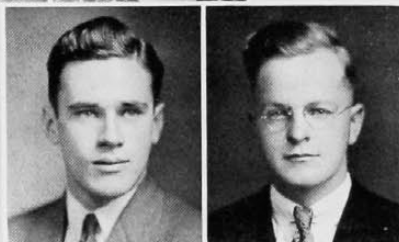
BERNARD LEVIN  
A.B.  
 $\Sigma\Delta M, \Sigma\Sigma, \Pi\Delta E$

JACOB LEVINE  
B.S.



ERVIN LIEBERMANN  
Cert. in Gen. Bus.

HENRIETTA LINGER  
B.S.  
A $\Delta\theta$



JAN LISZNIEWSKI  
M.E.  
B $\theta$ II,  
*Scabbard and Blade*

JAMES LONG  
A.B.

EDNA M. LOTZ  
Cert. Sec. Practice

ESTHER LUKENS  
B.S.  
K $\Delta$ , THE, Mortar  
Board, Fresh  
Painters



EDITH McCANDLESS  
A.B.  
A $\Delta\theta$ , I $\Sigma$ II, X $\Delta\phi$

HARVEY McCANDLESS  
M.B.



LOUISE MCCARREN  
Com. E.  
 $\Phi X E$

J. CLIFFORD MCDANIEL  
B.S.  
*Triangle, Scarab*

