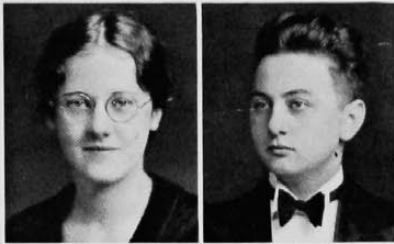




GLADYS MOSIER  
A.B.  
*ΔΖ*

CHARLES MOUNT  
Cert. in Gen. Bus.



MARGARET MURPHY  
R.N.

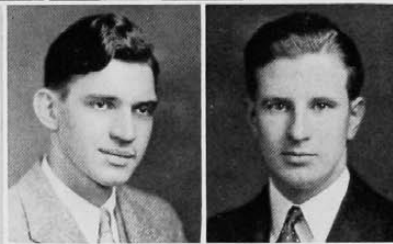
JOSEPH MUSCHLER  
Cert. in Accounting  
*ΔΣΠ*



CRYSTAL MEYERS  
R.N.

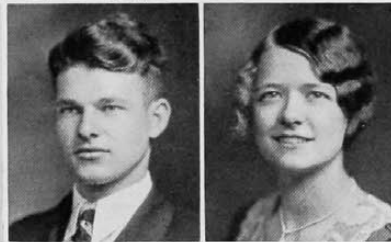
RUTH NASSAU  
B.S.  
*ΦΣΣ*

ROBERT NAU  
A.B.  
*ΦΔΘ, ΣΣ, Ulex*



MILTON NELSON  
Com. E.  
*ΙΧΕ, ΙΙΔΕ, Scabbard and Blade*

CARL NEUBAUER  
Ch. E.  
*A.C.C.*



VIRGINIA NOLLOTH  
B.S.  
*ΑΟΠ*

MILDRED NORTH  
R.N.  
*Trionon*

MARY G. NORTON  
A.B.



RICHARD NORTON  
C.E.

FRANK NOVELLI  
A.B.



J. PAUL O'BRIEN  
Cert. in Accounting

ROBERT OTHLING  
Cert. in Accounting

