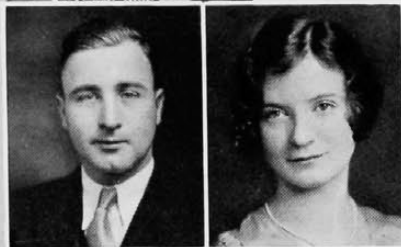




CATHERINE REWWER
B.S.
ZTA

MARTHA RICHARDS
B.S.



PHILLIP RIDDINGER
B.S.
*KKΨ, Scabbard and Blade,
L'Atelier*

JUNE RIPLEY
B.S.
XΔΦ



AARON ROBERTS
A.B.

RICHARD ROLFES
Ch. E.
A.C.C.

MARTIN ROLLMAN
M.E.
ΠΤΣ



MIRIAM ROLLMAN
Com. E
ZTA, ΠΧΕ

MILDRED ROSE
A.B.
ZTA



WALTER ROSENBAUM
Ch. E.
ΣAM

EUGENE ROTH
M.E.

VIRGINIA ROUSH
B.S.
ΦM



ARVELLA ROVER
B.S.
Trianon

FRANK ROY
Cert. in Adv.



DOROTHY ROZELL
R.N.

J. C. RUTTER
M.E.
KKΨ

