



JOHN THIER  
Com. E.  
 $\Sigma AE$

MARGARET THOMAS  
Cert. in Accounting



ETHEL THOMPSON  
R.N.

LOWELL THOMPSON  
LL.B.



VIRGINIA THORNELL  
B.S.  
 $KKI$

HOPE TIEMEYER  
A.B.  
 $AOH, X\Delta\Phi$



HAWLEY TODD  
A.B.  
 $\Delta T\Delta$

ROSELYN TOUFF  
B.M.  
 $\Delta\Phi E, AEI$

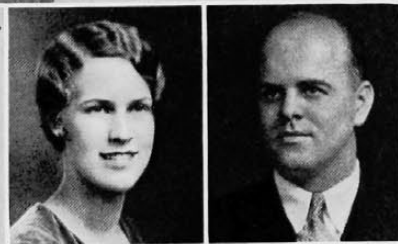


FRED E. TOWER  
Com. E.  
 $\Delta T\Delta, \Sigma\Sigma, \Pi\Delta E, Ulex$

KATHRYN TOWNSLEY  
A.B.  
 $AX\Omega$

ELSA TREFZGER  
B.S.  
 $\Theta\Phi A$

HERBERT TREFZGER  
Cert. in Int. Dec.



ANNA TURNELL  
Cert. Gen. Bus.

BEN TURPIN  
LL.B.



BERYLL ULLMAN  
B.S.  
 $\Phi\Sigma\Sigma$

JEAN VALENTINER  
A.B.  
 $K\Delta$

