



ERNST WEIER  
E.E.

ROBERT WEINTZ  
Cert. Accounting



VIRGINIA WEISBROD  
B.S.

BERNICE WEISS  
LL.B.  
 $\Phi\S\S$



IRENE WEISS  
A.B.  
 $\Phi\S\S$ ,  $\chi\Delta\Phi$

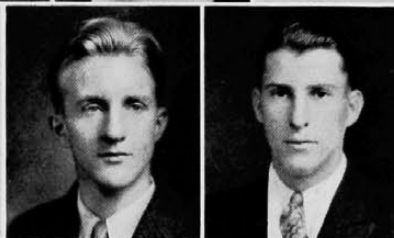
LILLIAN WEISS  
B.S.

VIRGINIA WELLS  
A.B.



JEAN WENINGER  
A.B.  
 $\chi\chi\Omega$ ,  $\lambda\Sigma\Pi$

WILLIAM WENZEL  
C.E.  
*Acacia, Scabbard and  
Blade, Braune Civils*



ALOYSIUS WERNING  
Cert. Ch. E.

LLEWELYN WESLEY    HARGIS WESTERFIELD  
Cert. in Traffic Mg't    B.S.



JAMES WHALEN  
E.E.  
 $\Phi K$

MARGARET WHITE  
B.S.  
 $\chi\Omega$



MARY E. WHITE  
A.B.  
 $\Sigma\Delta\Pi$

RUSSELL WHITEHEAD  
Com. E.  
*Triangle*

