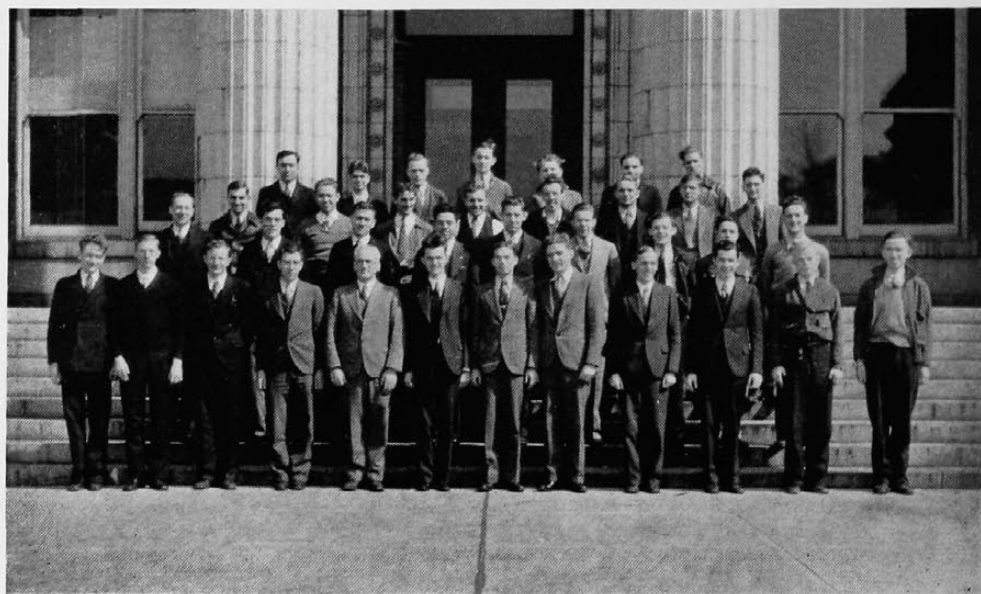


# American Institute of Electrical Engineers



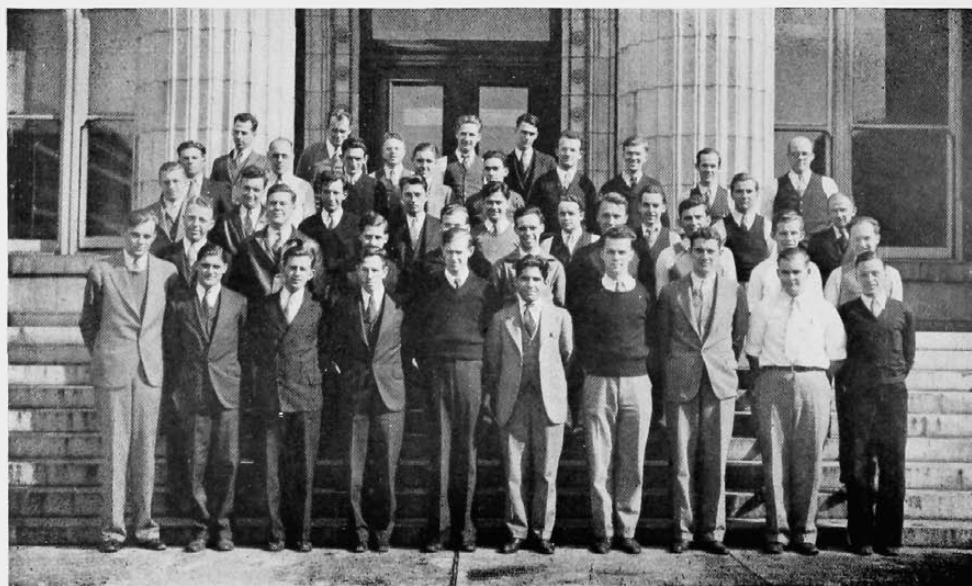
*Section I*

## *Officers*

PHILIP PFANNER .....	<i>Chairman</i>
CYRIL SCHMIDT .....	<i>Vice-Chairman</i>
LEWIS MACLAUGHLIN .....	<i>Secretary</i>
WILLIAM BREUNIG .....	<i>Treasurer</i>

The student branch of the A. I. E. E. was founded at the University of Cincinnati in 1912. The purpose of the organization is to bring about a more intimate contact between the students of the Electrical Engineering course.

At the monthly meetings technical papers are presented and discussed by practicing engineers and students. The student branch is associated with the national organization and leads to affiliation with it in the senior year.



*Section II*