

American Society of Mechanical Engineers

Section I

Officers

First Section

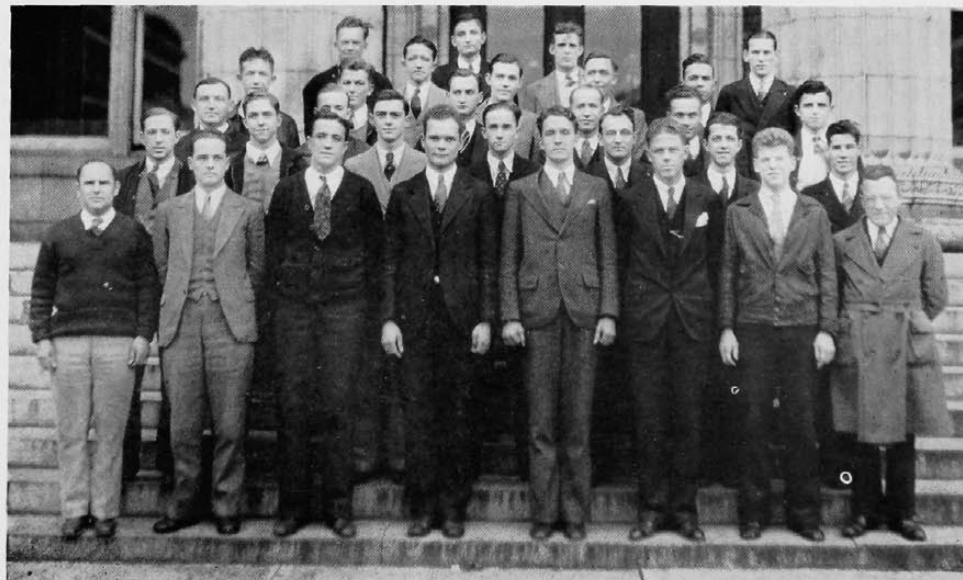
RICHARD MOSER	Chairman
JOHN KEATES	Vice-Chairman
JACK GALL	Secretary-Treasurer

The purpose of the Student Branch A.S.M.E. is to bring together those of common interests in the study and practice of Mechanical Engineering. The student organization attempts to acquaint the members with the procedure and purposes of the parent society. Moreover, it provides a means for direct contact with the senior members of the profession and with some of their current problems.

Officers

Second Section

RICHARD VOSLAMBER	Chairman
MELVIN ANDERSON	Vice-Chairman
NED DRUCKER	Secretary-Treasurer



Section II