

Nineteen-Thirty-Three

ELSIE BLACK,

B.S.

TUNIS BLACK,

A.B.

$H\Sigma\Phi$



ALMA BLEDSOE,

B.S.

ROY BOCK,

B.M.

$\Phi\chi$



HERBERT BOEHNER,

M.D.

LORAL BONHAM,

Aero. E.

$A.C.C.$

HELEN BOOKMAN,

A.B.

JOSEPH F. BOSCHERT,

B. S. in Com. E.

$\Delta\Delta\Delta$

LESTER BOSSERT,

B.M.

ATHA BOWMAN,

B.S.

$N\Sigma N$

CHRYSTAL BOYD,

B.S.

LEONARD BRADT, JR.

Ch.E.

$A.C.C.$, $AX\Sigma$, $TBII$

ALLAN BRAMKAMP,

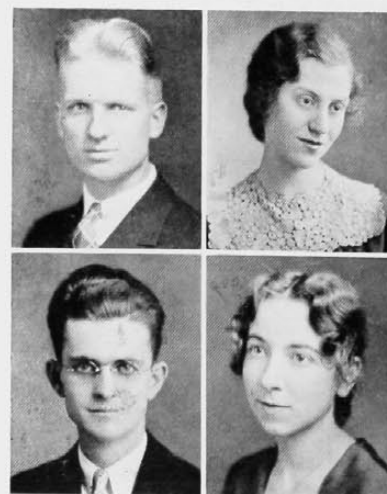
A.B.

NANCY BRANT,

B.S.

$B\Theta\Pi$, $O\Delta K$, $\Pi\Delta E$, $Ulex$

ZTA



FRANK BREEN, JR.

E.E.

ELMA ELIZABETH BROCKSMITH,

B.S.

ΔXA

$\Delta\Delta\Theta$, $\Delta\Phi A$