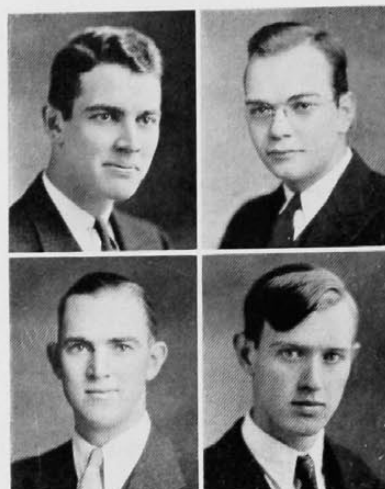


Nineteen-Thirty-Three

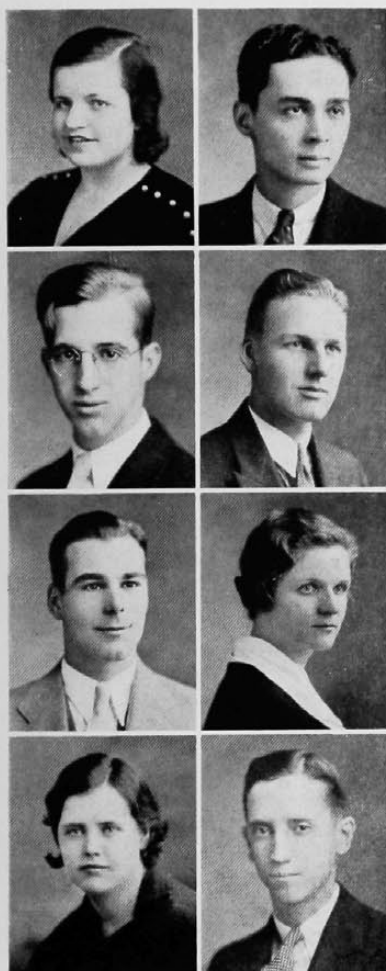
✓ EDWARD C. EBELING,
E.E.
IXE

JOHN E. EBERHARDT,
Ch.E.
AXΣ, TBII



FORD E. EDDY,
B.M.
AKK

C. W. ELBLE,
E.E.
TBII, HKN



VIRGINIA ELLINWOOD,
A.B.

JOHN MARION ELLIS,
Cert. in General Business

ROGER A. ENGELKEN,
Cert. in Ch. Eng.

EDWIN F. ESCHMEYER,
A.B.
ΣAE

EDWARD A. ESHMAN,
B.S.
ATΩ, ΦEK

PAULINE DOWNING ESSELBORN,
A.B.
ΛΔΔ

✓ RUTH MARION EVERETT,
B.S.
XΩ

✓ LLOYD R. EVERHARD,
Com. E.

JOSEPH H. EVERSMAN,
Cert. in Accounting

OLIVE EWAN,
B.S.
*ΔΔΘ, Arete
Mortar Board*



VIRGINIA MARIE FAHRENBRUCK,
B.S.
AXΩ

EUCLID L. FANEUF,
Ch.E.