

Nineteen-Thirty-Three

HETE FROESLER, A.B.
ΔΦΑ

MILDRED CATHERINE FROMME, B.S.

RUTH MAURINE FUSON, B.S.
XΩ

GEORGE L. GAINER, Cert. in Accounting



JOHN D. GAITHER, Com. E.
SAE

REGINALD D. GASKILL, LL.B.
XΨ, ΦΑΔ



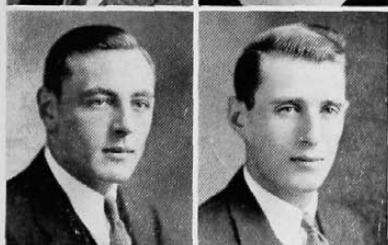
ELSIE GATES, B. S. in Nursing

HARRIET HELEN GAU, A.B.
ΘΦΑ, Mortar Board



CHARLES GEHLER, Cert. in Accounting

✓ JANE GILDEHAUS, A.B.
KΔ



WILLIAM GILLILAND, B.S.
ΠΚΑ, ΟΔΚ, ΦΕΚ, ΣΣ

LOUIS GINBERG, A.B.

THEODORE GITTELMAN, Cert. in Accounting

MARY LOUISE GLANCY, B.S.

ROBERT J. GLEASON, C.E.
ΑΤΩ, ΚΚΨ

SARAH GLUECK, B.S.
ΧΔΦ

