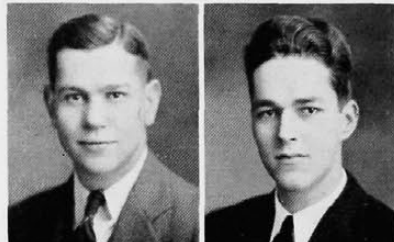




LOUISE R. GOERING,
A.10, *Arete* B.S.

MAURICE GOLDBERG,
Com. E.



✓ CLIFFORD GOLDMEYER,
Com. E.
ATQ, Ulex, ΣΣ

CHARLES T. GOOSMANN,
Com. E.
ΔΣΠ

IRMA C. GORMAN,
A.B.
Trianon, ΔΦA

ADELENE GORNO,
B.S.
ΘΦA



CHARLES GOWDY,
LL.B.
ΦAA, ΦKT

GEORGE R. GRACE,
Com. E.
ΔΣΠ



GEORGE EDWARD GRADEN,
B.S.

RICHARD G. GRASSY,
Geol. E.
BK, AXΣ, ΣTE, TBΠ



EVELYN MARION GRIFFITH,
A.B.
Trianon

JOHN D. GRIFFITHS,
C.E.



J. EMMERT GROFF,
B.M.

JEAN GROSSMAN,
B.S.
ΦΣΣ



FRANCIS C. HABERMAN,
M.D.
NΣN, KC

RELLA GRACE HAGEMAN,
B. S. in Nursing