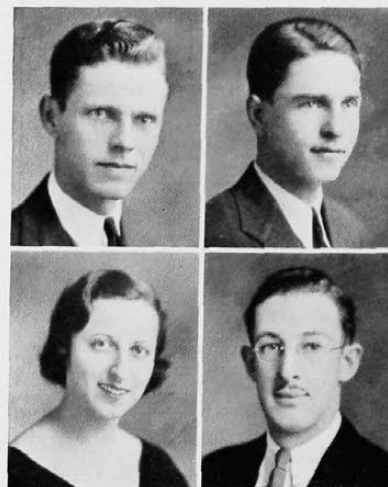


Nineteen-Thirty-Three

ELDON W. KAIN,
B. S. in Commerce
ΔΜΔ

CHARLES RAYMOND KARRY,
Evening Com.



PHYLLIS KASLE,
ΣΔΤ B.S.

SAMUEL RICHARD KATES,
ΦΔΕ M.B.



RAYMOND H. KATHMAN,
Cert. in General Business

ALFRED B. KATZ,
ΦΒΔ, ΔΦΔ A.B.

KARL KEANS,
M.D.

✓ *lunch*
MILDRED KEIFFER,
ΦΔ A.B.

ROBERTA KELLY,
ΑΔΘ A.B.

SABINA A. KELLY,
Cert. in General Business

HENRY G. KEMP,
C.E.

ROBERT J. KEMPER,
E.E.

WILMA KENNEWEG,
B. S. in Nursing

GEORGE N. KIBLER,
Acacia C.E.

LILLIAN B. KIBLER,
B.S.

LAURA ELIZABETH KIENZLE,
ΧΩ A.B.

