

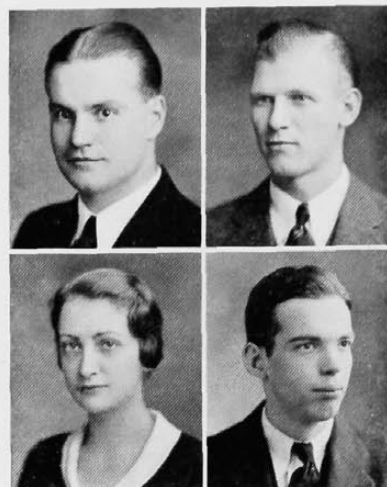
*Nineteen-Thirty-Three*

ELDON A. PARK,  
Com. E.  
*AKΨ*

CHARLES F. PATTEN,  
B.S.

JANE MOORE PATTERSON,  
A.B.  
*ΔΔΔ*

ROBERT J. PAUL,  
Ch. E.  
*ACC*



GRACE ALTHEA PAYNE,  
A.B.  
*ΔΣΘ*

CAROLYN PENDERY,  
A.B.  
*ΔΔΘ*



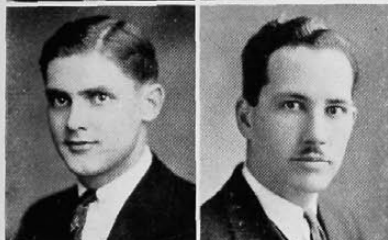
BROWNLIE PERKINS,  
M.D.

CARMEN PERRONE,  
A.B.  
*ΘΦΔ*



ANNE Z. PERRY,  
A.B.  
*ΔΣΘ*

MILDRED MERRILL PERRY,  
LL.B.  
*ΦΔΔ*



PHILIP K. PFANNER,  
E.E.  
*ΣΔΕ, HKN*

CHARLES LOUIS PFEIFFER,  
B.M.  
*ΠΚΑ, ΑΚΚ, ΠΚΕ*

JEAN LAURIE PHARES,  
A.B.  
*ΚΚΓ, Mortar Board*

SARA PHILLIPS,  
A.B.

CHARLOTTE PIEPER,  
Cert. in Journalism

THOMAS C. PIERSON,  
LL.B.  
*ΔΤΔ, ΦΔΔ*

