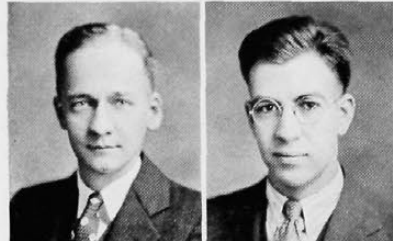


MONETTE C. ROSS,  
 $\Sigma\Delta P$ ,  $TB\Pi$  C.E.



CARL ROUSH,  
B.M.

SYLVIA RUBIN,  
 $\Phi\Sigma\Sigma$  A.B.

MARY RUPERT,  
B. S. in Nursing

JAMES C. RUTTER,  
M.E.

J. BLAKELY RYAN,  
 $\Pi T\Sigma$  M.E.

ALFRED J. SACKSTEDER,  
E.E.

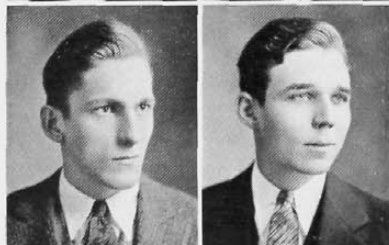
LOUIS ARTHUR SAFER,  
 $\Phi\Delta E$  B.M.

JOHN ISAAC SAKS,  
*Acacia*,  $\Phi BK$  A.B.

EDWIN S. SAMSON,  
 $\Sigma\Delta P$  Com. E.



AMERICO SANSONE,  
A.B.

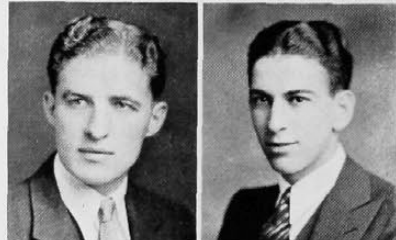


HARRY SCHIERENBECK,  
Cert. in Mech. Eng.

*The Cincinnati*

ROBERT J. ROTH,  
 $\Phi K$ ,  $AK\Psi$  Com. E.

NATHAN RUBEN,  
E.E.



JAMES A. SCHAAAL,  
 $AKK$  B.M.

HENRY T. SCHLACTER,  
 $\Sigma X$  A.B.