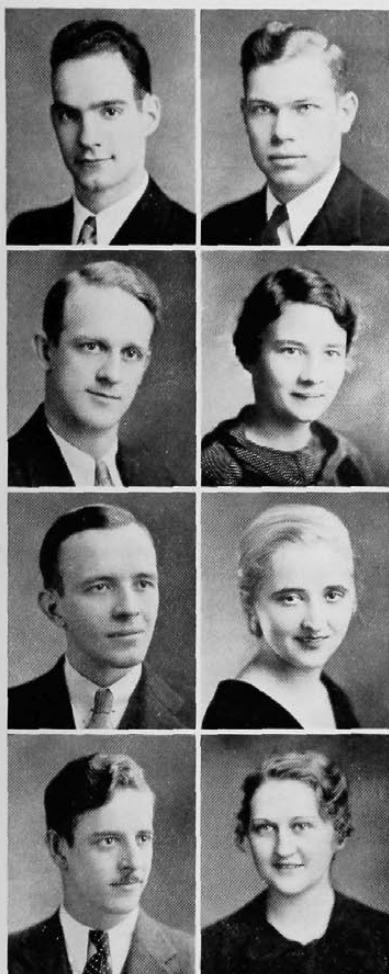


Nineteen-Thirty-Three

CLYDE L. SCHROTH,
Cert. in Landscape Arch.

SYLVIA NATALINE SCHULTZ,
B.S.
 $\Phi\Sigma\Sigma$



BURKETT SHAW,
Com. E.
 $\Lambda\chi\Lambda, \Lambda K\Psi$

EDITH MAXINE SHAYESON,
B. S. in Commerce

BERNICE K. SCHULTZ,
B.S.
 ΘY

ANNA MARIE SCHULTZE,
B.S.
 $\Phi\Delta$

ERIC T. SCHULZE,
A.B.

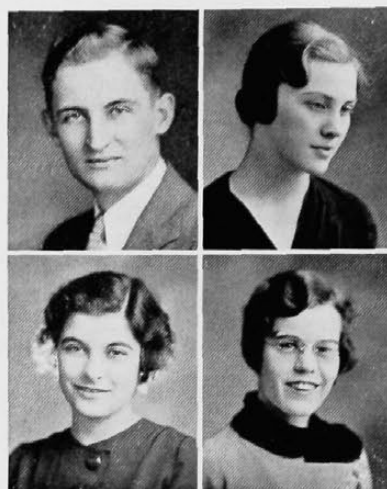
RUSSELL A. SEIFERT,
Cert. in Mech. Eng.

F. M. SELL,
Ch. E.
 $TBII$

LOUIS W. SEYLER,
B.M.
 $\Phi X, BM$

HOUSTON W. SHAW,
B.M., B.S.
 $\Sigma\Lambda E, N\Sigma N$

CHARLES SHEAR, ✓
B.S.
 $\Phi EK, Ulex$



PHILIP W. SCOTT,
Com. E.
 $IXE, B\Gamma\Sigma, \Lambda K\Psi, KK\Psi,$
 $Ulex, Scabbard and Blade,$
 $O\Delta K$

MARTHA E. SELBERT,
B.S.
 ΔZ

ANNELLE SEYLER,
Cert. in Sec. Practice,
and General Business

PAULINE SHAFER,
B. S. in Nursing

