

✓ JAMES P. WALSH,  
Com. E.  
*AKΨ, Scabbard and Blade*

EDNA WAMBOLDT,  
A.B.  
*ZTA*

HERBERT WARM,  
A.B.

HARRY SATES WEIL,  
Evening Commerce

HELEN A. B. WEISS,  
B.S.  
*Trianon*

GEORGE B. WENNING,  
Cert. in Marketing

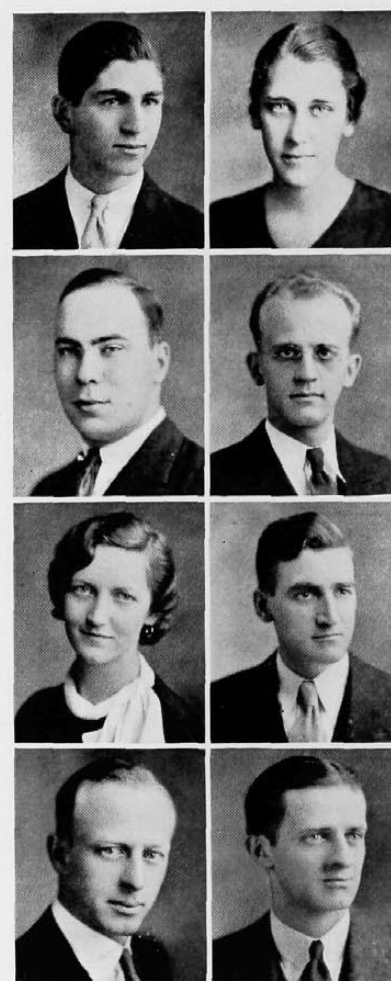


ANTHONY J. WERNER,  
Com. E.  
*ΔΣΠ*

L. C. WERTHEIMER,  
B.M., B.S.

CLARENCE F. WALTAMATH,  
Cert. in Accounting

LOUISE JEWEL WARD,  
A.B.  
*ΔΣΘ*



MARY CHARLESSA WERSEL,  
A.B.  
*BΠE, ΧΔΦ*

CORNELIUS CLAYBOURNE WEST,  
Cert. in Bus. Mgt.