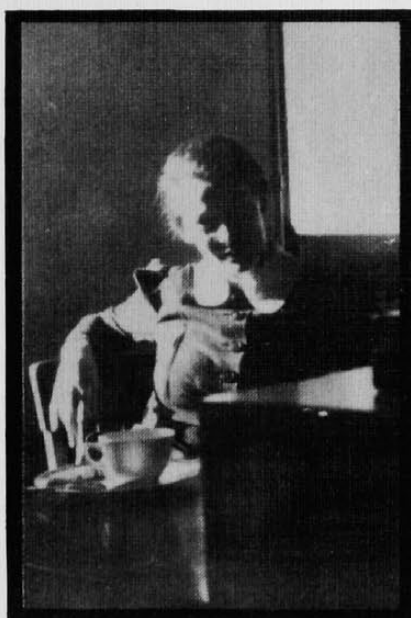


# Faces of the Year



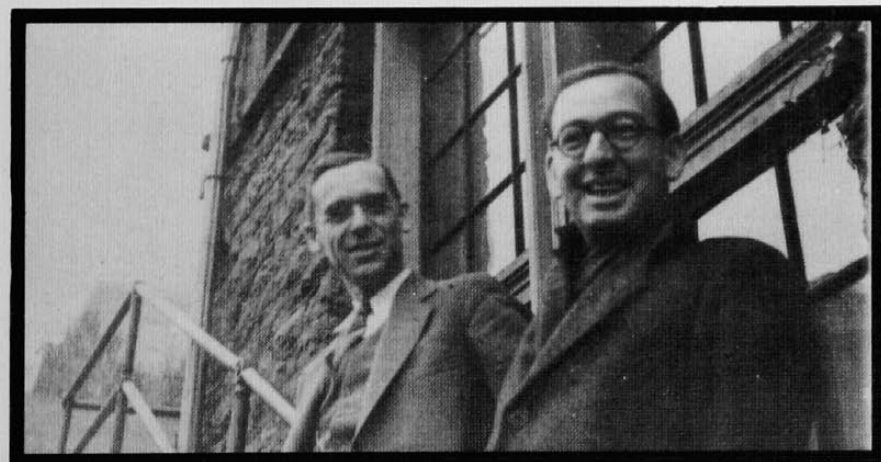
Dean of Women through many hectic years, Josephine Simrall passed through the torrentious twenties when the rest of us were bobbing our hair, dancing Charleston, and staying up all night, with characteristic equanimity that earns for her the true title of lady.



From Queen and outstanding personality was Adele Berger, now secretary in the office of the Dean of Women. She stayed on the campus to soften the breach between undergraduate life and the cold, cold world. Miss Berger appears to be in her cups.



Outstanding in the field of Endocrinology Charles K. Weichert, Ph. D., has yet enough time to devote an appalling amount of it to his students.

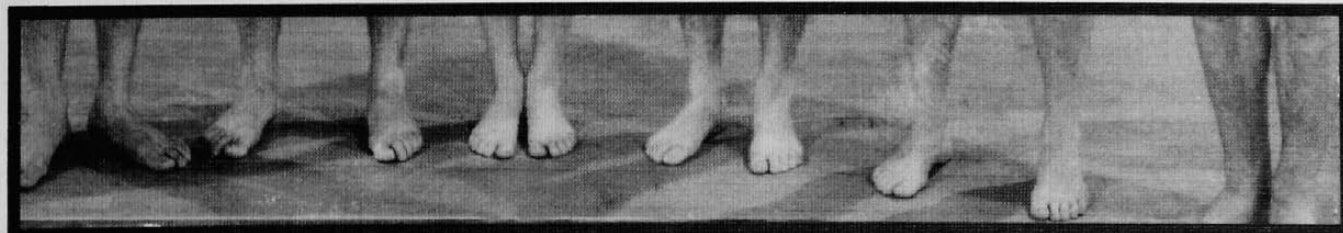


## FACULTY FAVORITES

Popular fellows of the Quadrangle schools are Profs. Wabnitz and Oddy of the English and History departments. Believe it or not, them there engineer fellas even read and things, thanks to this pair.



At five after four of a summer's morning, one is not likely to be one's spryest. Especially when one has been a stag and drunk his fill. Duncan Frame was caught by the photographer after a hard night's study.



Inspirations of poets and ad-writers, motive force long before the automobile, feet are still held by professors (as they were in the first class-rooms in the Garden of Eden) to encase the brains of students.