



FIG. 7.—WORK OF MRS. C. A. PLIMPTON.

The use of Parian paste for light relief-work, or for modelling in high relief, has received special attention from a number of ladies. Misses Elizabeth and Adelaide Nourse have produced some effective work in pottery in bold relief. Fig. 11 shows a piece of carving in yellow clay, unglazed, by Miss Adelaide Nourse; Fig. 12, a vase of cream-colored clay, carved by Miss Fannie M. Banks.

An interesting specialty is seen in the work of Miss Agnes Pitman, a part of the design being incised on a common clay body, which is then covered with a colored slip; finally other designs in low relief are laid on in Parian paste, modelled, and wrought with delicacy and skill. Miss Pitman also shows work in incised and low-relief decoration covered with dark glazes. A vase by Miss Pitman (Fig. 13) is of yellow clay, with incised designs and low-relief work in brown and white clay, semi-glaze finish.

The point of interest in the work of these Cincinnati women (leaving out of the question the excellence of its execution) is in the decorative uses which have been made of the common clays, and the variety and originality of the styles in which they are working. The various kinds of work mentioned in this article, except the few pieces of overglaze-work on European porcelain, are all done in Ohio clays from Cincinnati potteries, and, with few exceptions, are from the pottery of Mr. Frederick Dallas.

A piece by Mrs. William Dodd (Fig. 14), body of sage green (a combination of blue and yellow clays), shows a landscape in low relief, in red, brown, and white clays, with a garniture of woodbine in white clay; semi-glaze finish.

Fig. 15.—Stone-china tea-pot: blue glaze; decoration in gold and white enamel, low relief, by Mrs. Walter Field.

Fig. 16.—Cincinnati

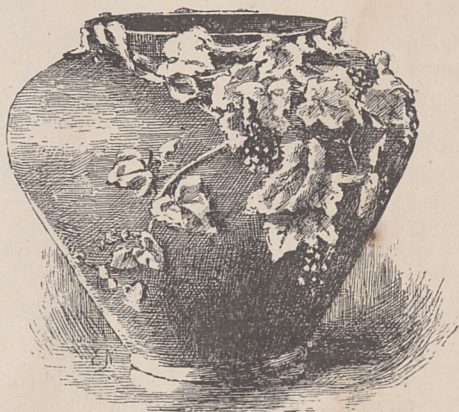


FIG. 8.—WORK OF MRS. C. A. PLIMPTON.



FIG. 9.—WORK OF MRS. E. G. LEONARD.